

## Simi Valley

**Waterbody:** Bus Canyon Drain (tributary to Arroyo Simi)

**Location:** North of intersection at 5<sup>th</sup> St. and Los Angeles Ave. (34°16'18.59"N, 118°47'1.51"W)

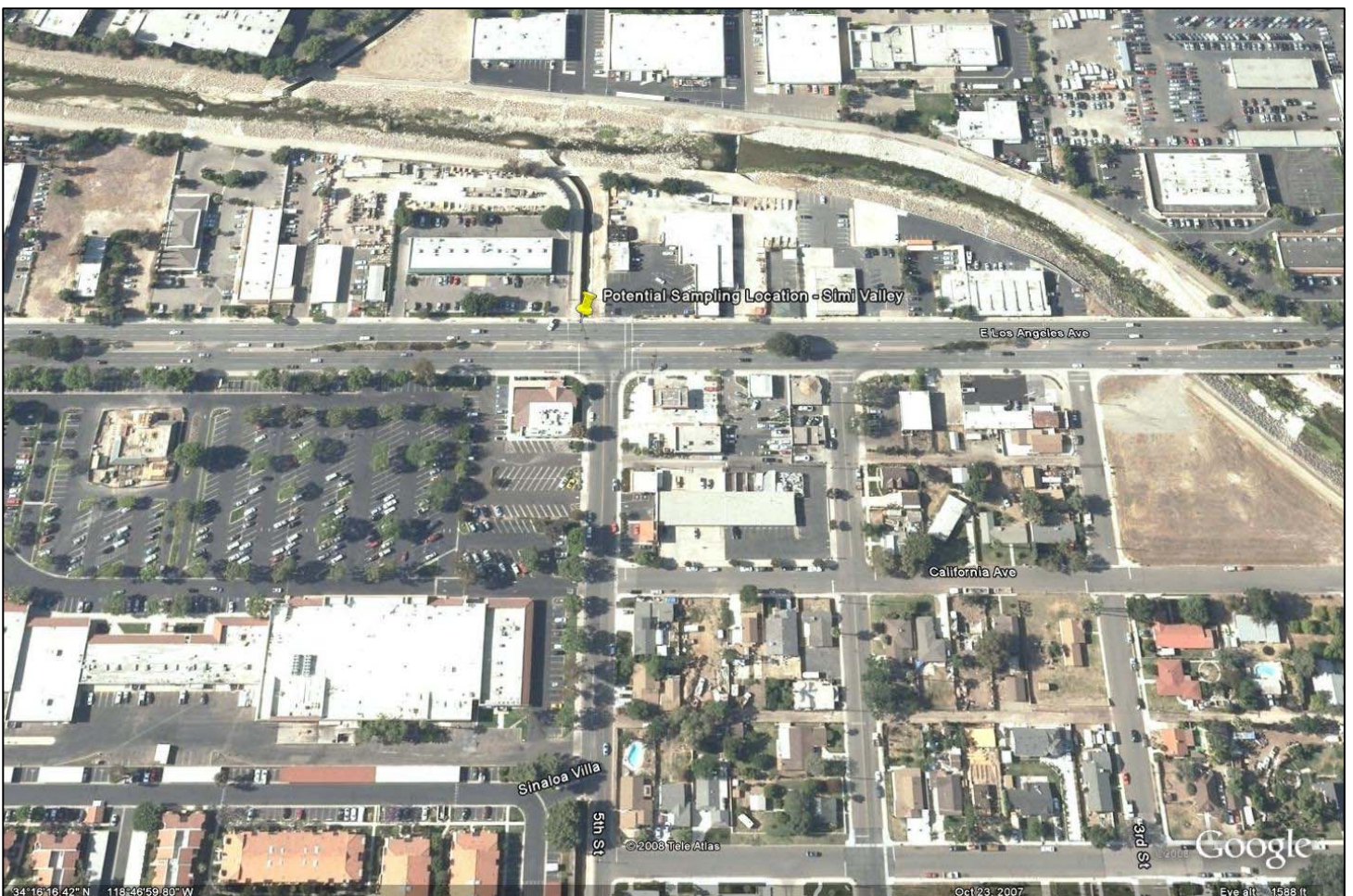
**Pros:** Likely well-defined rating table, located behind VCWPD gate

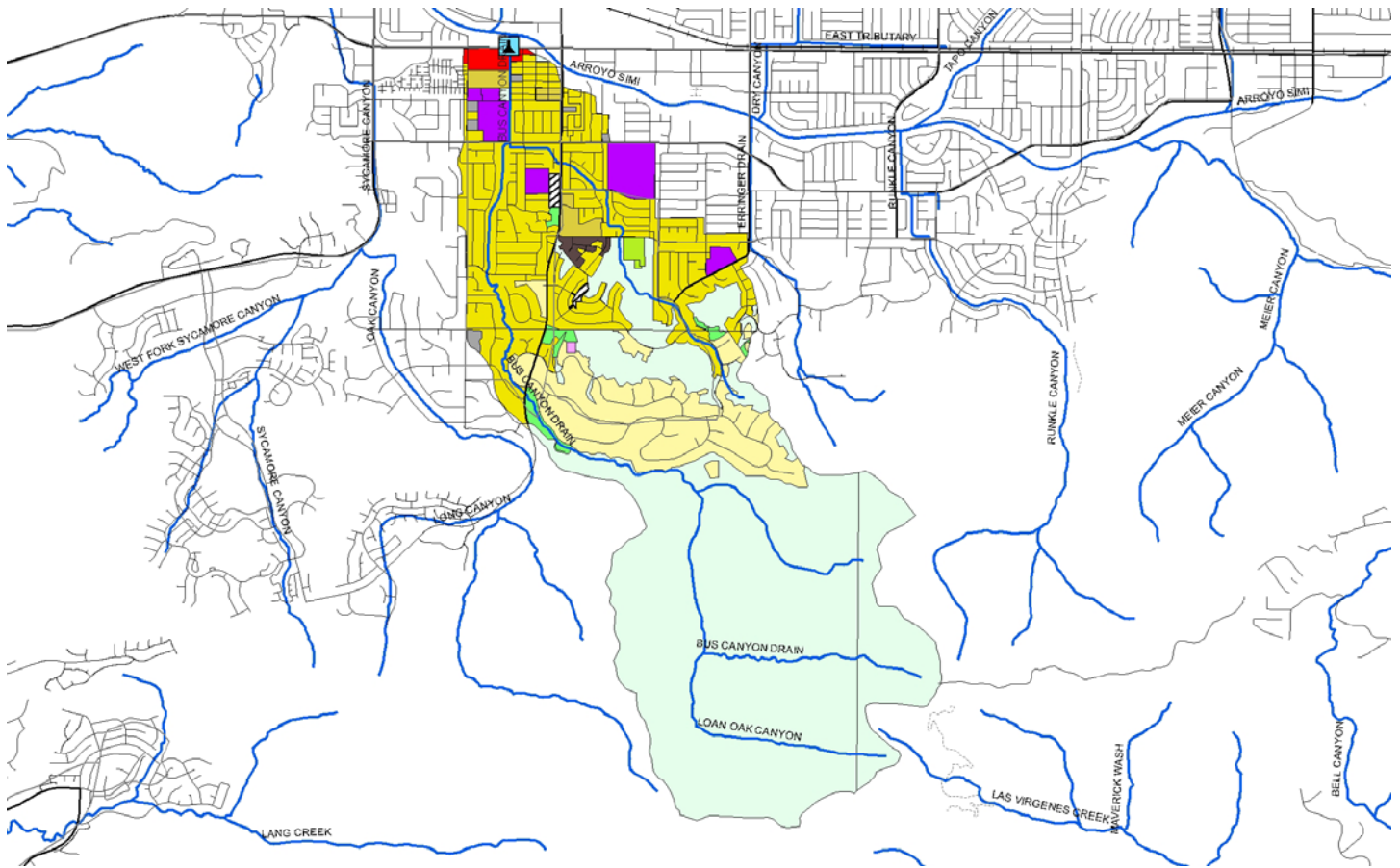
**Cons:** Pedestrian traffic on levee nearby

**Outstanding Site Selection Tasks:** Assess impacts of large groundwater discharge upstream, move sampling location shown on watershed map

**Other Potential Sites:** Upstream at 5<sup>th</sup> and Ventura Ave.

**Dry Season Flow Potential:** Likely year round flow due to urban runoff and groundwater discharge upstream





### Entire City

Land Use	Acres	% of Total Watershed
Agriculture	435.5	1.6%
Cemeteries	34.3	0.1%
Com_Indus. Mix	24.4	0.1%
Commercial	1051.4	3.9%
Extraction	111.8	0.4%
Facility	217.1	0.8%
Industrial_1	50.3	0.2%
Industrial_3	353.3	1.3%
Industrial_4	5.9	0.0%
No Info Given	382.0	1.5%
Recreation	560.9	2.0%
Res.1	1025.0	3.7%
Res.2	586.0	2.2%
Res.3	7947.7	29.5%
Res.4	110.7	0.4%
Schools	517.5	1.9%
Transportation	546.9	2.0%
Under Construction	385.6	1.4%
Utilities	261.0	1.0%
Vacant Undifferentiated	12291.5	45.6%
<b>Totals</b>	<b>26898.6</b>	<b>100.0%</b>

### Selected Subwatershed

Land Use	Acres	% of Total Watershed
Agriculture	33.0	1.0%
Cemeteries	10.1	0.3%
Commercial	22.6	0.7%
Facility	12.9	0.4%
No Info Given	9.4	0.3%
Res.1	395.5	11.9%
Res.2	40.3	1.2%
Res.3	782.9	23.6%
Schools	96.7	2.9%
Under Construction	15.5	0.5%
Utilities	1.8	0.1%
Vacant Undifferentiated	1900.0	57.2%
<b>Totals</b>	<b>3320.7</b>	<b>100.0%</b>